



Cut out the black lines



Score dotted lines



Glue this parts

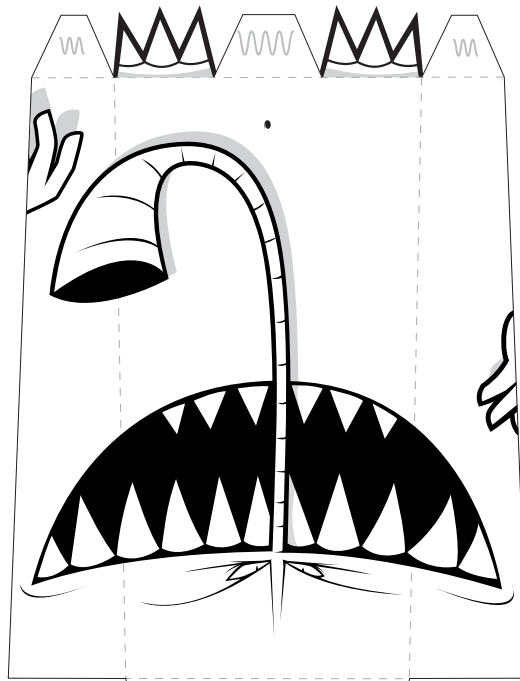
General tips:

Works best on 185-200g paper

Use Fixogum or doublesided tape as glue

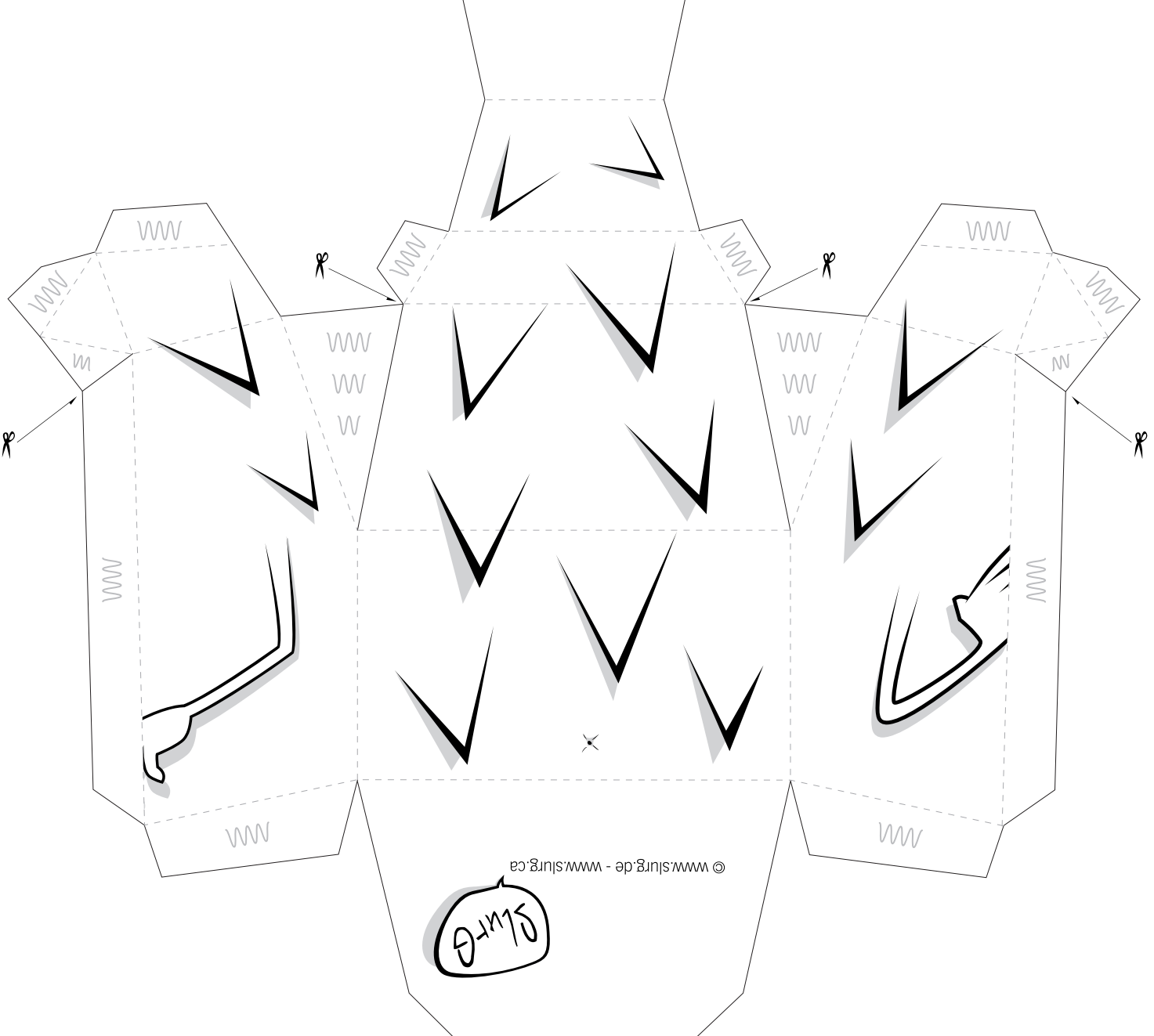
Start at the back, and work towards the front. Keep the bottom section open until the end, cause you might need the hole to press the parts together.

✂ Don't forget to cut here too!



[www.slurg.de](http://www.slurg.de) - [www.slurg.ca](http://www.slurg.ca)

© Slurg 12/2009



© [www.slurg.de](http://www.slurg.de) - [www.slurg.ca](http://www.slurg.ca)

